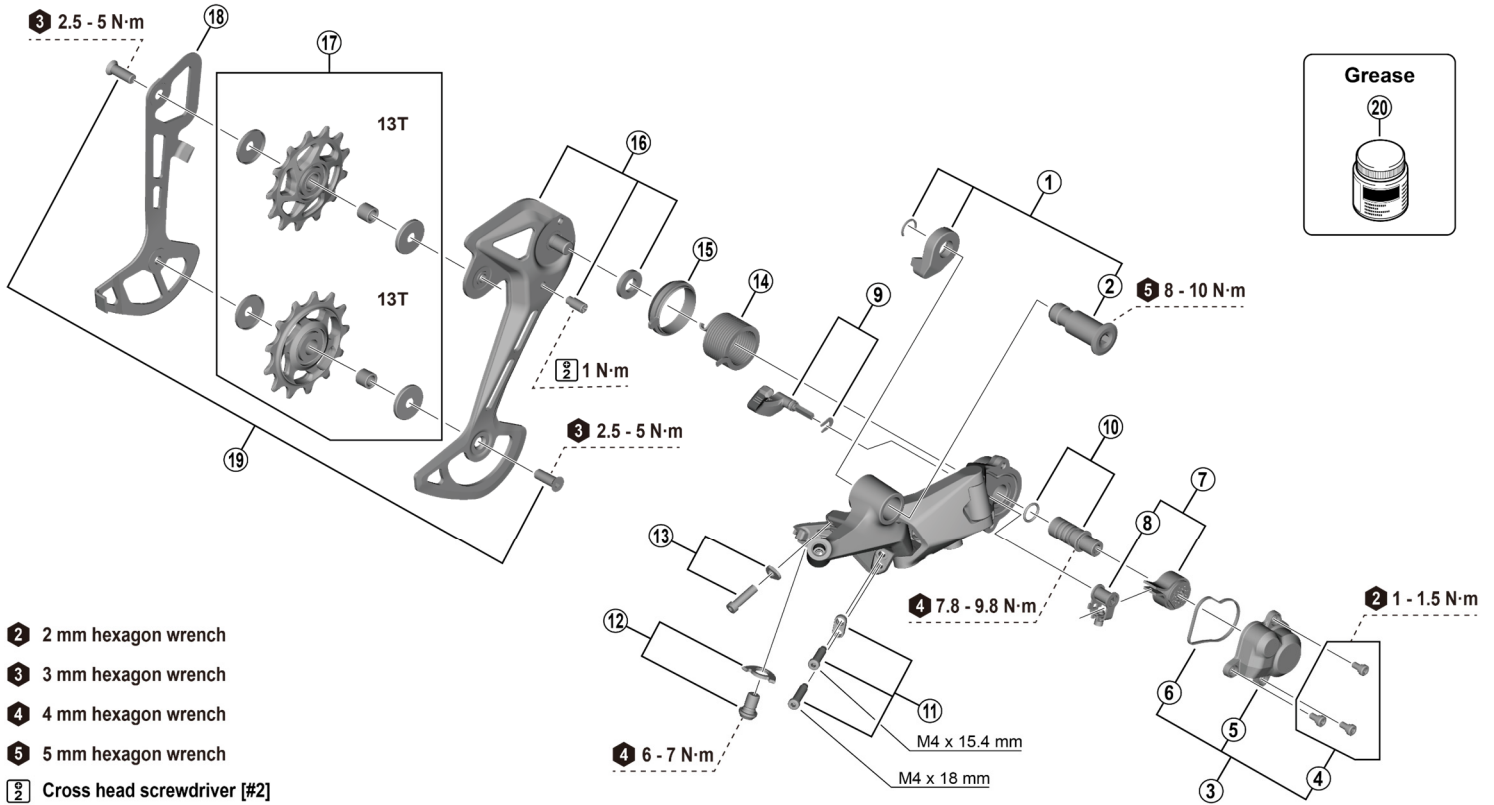


DEORE Rear Derailleur RD-M6200-SGS 12-speed



- 2** 2 mm hexagon wrench
- 3** 3 mm hexagon wrench
- 4** 4 mm hexagon wrench
- 5** 5 mm hexagon wrench
- 2** Cross head screwdriver [#2]

ITEM NO.	SHIMANO CODE NO.	DESCRIPTION	INTERCHANGEABILITY	
1	Y3HK98010	B-axle unit	A	
2	Y3HK42000	B-axle	A	
3	Y3HK98020	Plate cover unit	A	
4	Y5Y198070	Plate unit cover screw set (3 pcs.)	A	
5	Y3HK43000	Plate unit cover	A	
6	Y3FA63000	Plate unit cover gasket	A	
7	Y3GF98040	Stabilizer unit and cam unit	A	
8	Y3E498040	Cam unit	A	
9	Y3FA98040	Switch lever unit and fixing plate	A	
10	Y5PV98060	Plate axle and O-ring	A	
11	Y3FW98050	Stroke adjusting screws and plate	A	
12	Y3FW98060	Cable fixing screw and plate	A	
13	Y3FW98070	End adjust screw (M4 x 14.1) and plate	A	
14	Y3FA55000	Plate tension spring	A	
15	Y3FA62000	P-seal ring	A	
16	Y3HK98030	Outer plate assembly (SGS)	A	
17	Y3FY98010	Tension and guide pulley set	A	
18	Y3HK26000	Inner plate (SGS)	A	
19	Y5V598140	Pulley screw 12.5 mm (2 pcs.)	A	
20	Y04121000	New grease for stabilizer (Net. 50 g)	A	

A: Same parts.

B: Parts are usable, but differ in materials, appearance, finish, size, etc.

Absence of mark indicates non-interchangeability.

Specifications are subject to change without notice.

Jun.-2026-5138

© Shimano Inc. I

SHIMANO



quefairedemesdechets.fr