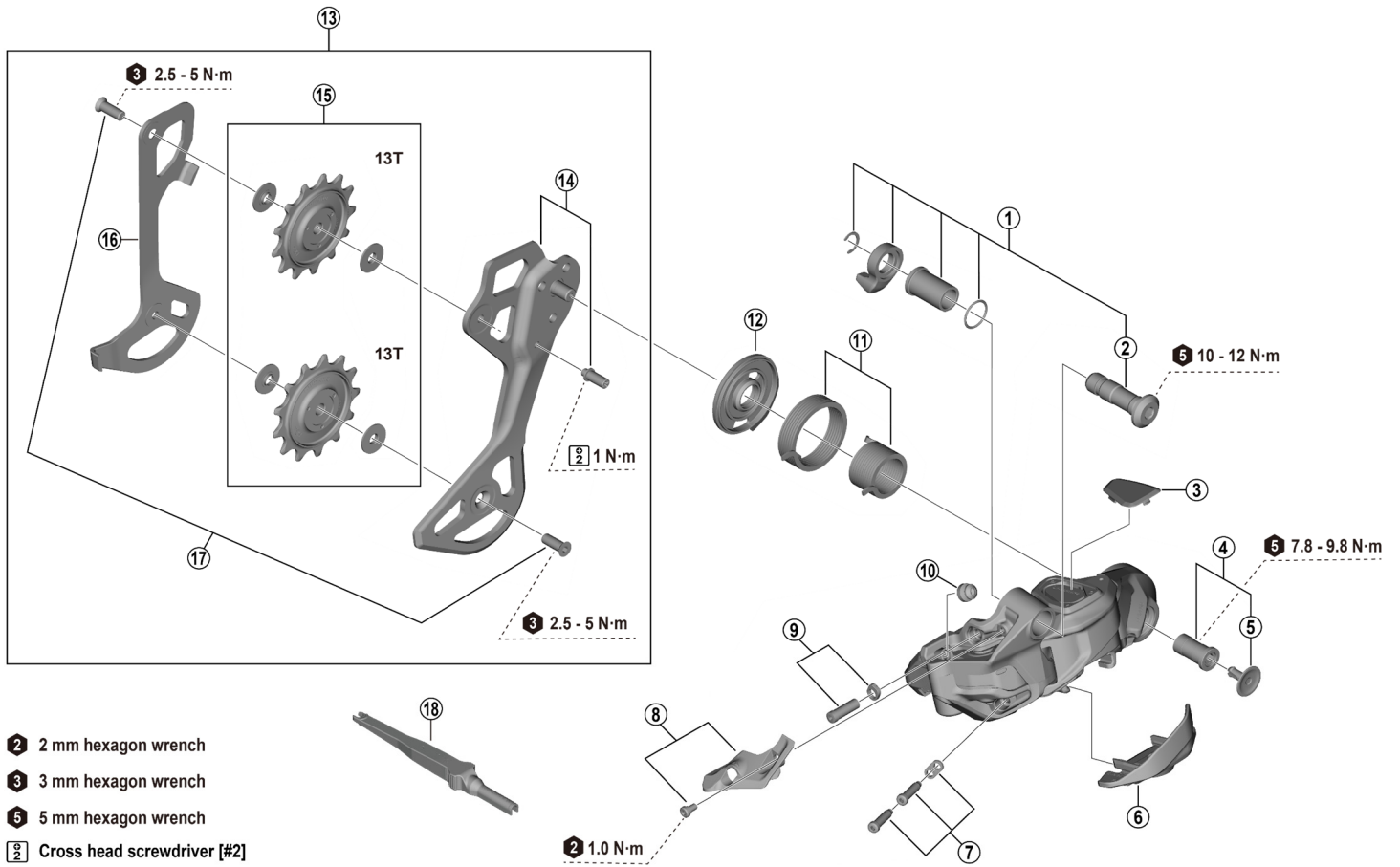


DEORE XT Rear Derailleur (12-speed)

# RD-M8250-GS RD-M8250-SGS



- 2** 2 mm hexagon wrench
- 3** 3 mm hexagon wrench
- 5** 5 mm hexagon wrench
- 2** Cross head screwdriver [#2]

RD-M8250

ITEM NO.	SHIMANO CODE NO.	DESCRIPTION	INTERCHANGEABILITY	
1	Y3KA98060	B-axle unit	B	
2	Y3KA9801T	B-axle	B	
3	Y3K79802T	Outer link cap	A	
4	Y3KA98070	Plate axle and cap	B	
5	Y3K79803T	Plate axle cap	A	
6	Y3KA98080	Battery holder		
7	Y3HY98030	Stroke adjusting screws and plate	B	
8	Y3K798050	Cable cover and fixing screw	A	
9	Y3K798060	End adjust screw and plate	A	
10	Y3KR9801T	Plug cover	A	
11	Y3K798070	Plate tension spring unit	A	
12	Y3K79805T	Plate bumper	A	
13	Y3KA98010	Plate unit (GS)	B	
	Y3KA98020	Plate unit (SGS)	B	
14	Y3KA98040	Outer plate assembly (GS)	B	
	Y3KA98050	Outer plate assembly (SGS)	B	
15	Y3KA98030	Pulley set	B	
16	Y3K79806T	Inner plate (GS)	A	
	Y3K79807T	Inner plate (SGS)	A	
17	Y3FW98090	Pulley screw (2 pcs.)	B	
18	Y7HE40000	TL-EW300 Plug tool	A	

A: Same parts.

B: Parts are usable, but differ in materials, appearance, finish, size, etc.

Absence of mark indicates non-interchangeability.

Specifications are subject to change without notice.

Torque information is listed.

Jul.-2025-5104A

© Shimano Inc. I

# SHIMANO

