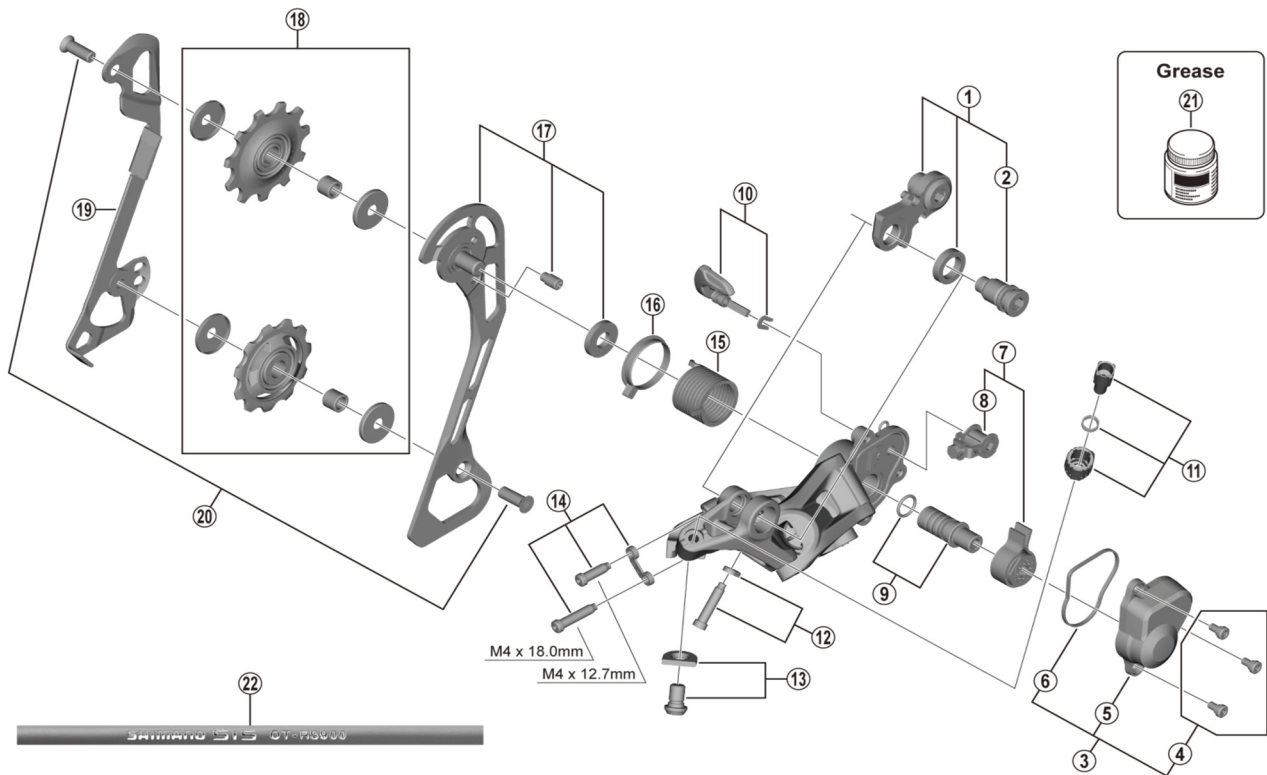


# GRX Rear Derailleur RD-RX400 (10-speed)



ITEM NO.	SHIMANO CODE NO.	DESCRIPTION
1	Y3F398020	Bracket Axle Unit (for normal type)
2	Y3F358000	B-Axle 2 (for Direct Mount type)
3	Y3GE98020	P-Cover Unit
4	Y5Y198070	P-Cover Bolt Set (3 pcs.)
5	Y3GE41000	P-Cover
6	Y3FK41000	P-Cover Packing
7	Y3GE98060	Stabilizer Unit
8	Y5Y198120	Cam Unit
9	Y5PV98060	P-Axle & O-Ring
10	Y3GE98030	Switch Lever Unit & Fixing Plate
11	Y3F398030	Cable Adjusting Bolt Unit
12	Y3E998040	End Adjusting Bolt (M4 x 18) & Plate
13	Y3F398040	Cable Fixing Bolt & Plate
14	Y3E998060	Stroke Adjusting Bolts & Plate
15	Y5PV17000	P-Tension Spring
16	Y5PV24000	P-Seal Ring
17	Y3GL98020	Outer Plate Assembly
18	Y3GL98010	Tension & Guide Pulley Set
19	Y3E526000	Inner Plate
20	Y5V598140	Pulley Bolt (2 pcs.)
21	Y04121000	New Grease for Stabilizer (Net. 50g)
22	Y0BM98011	OT-RS900 (Black) 240 mm x 10 pcs. (with Sealed Outer Cap & Outer Cap with Long Tongue)
	Y0BM98021	OT-RS900 (White) 240 mm x 10 pcs. (with Sealed Outer Cap & Outer Cap with Long Tongue)
	Y0BM98031	OT-RS900 (Red) 240 mm x 10 pcs. (with Sealed Outer Cap & Outer Cap with Long Tongue)
	Y0BM98041	OT-RS900 (High-tech gray) 240 mm x 10 pcs. (with Sealed Outer Cap & Outer Cap with Long Tongue)

May-2019-4576

© Shimano Inc. I