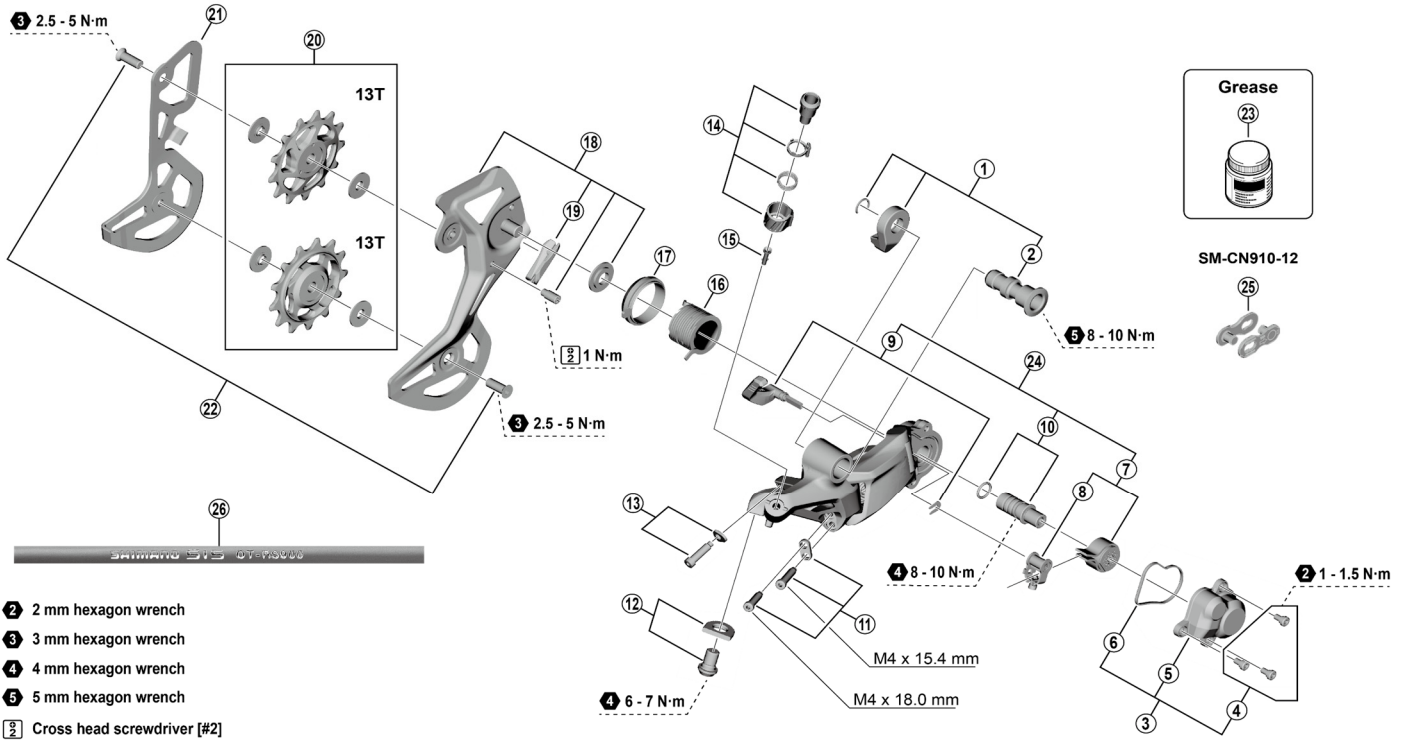


GRX Rear Derailleur (12-speed)

RD-RX822-GS
RD-RX822-SGS



RD-RX820

ITEM NO.	SHIMANO CODE NO.	DESCRIPTION	INTERCHANGEABILITY
1	Y3FW98020	Mounting screw unit	
2	Y3FW42000	Mounting screw	
3	Y3HK98020	Plate cover unit	
4	Y5Y198070	Plate unit cover screw set (3 pcs.)	A
5	Y3HK43000	Plate unit cover	
6	Y3FA63000	Plate unit cover gasket	
7	Y3GF98040	Stabilizer unit and cam unit	
8	Y3E498040	Cam unit	
9	Y3FA98040	Switch lever unit and fixing plate	
10	Y5PV98060	Plate axle and O-ring	A
11	Y3FW98050	Stroke adjusting screw and plate	
12	Y3F398040	Cable fixing screw and plate	A
13	Y3JT98010	End adjust screw (M4 x 15) and plate	
14	Y3E998030	Cable adjustment barrel unit	A
15	Y5PV48000	Cover with tongue	A
16	Y3FA55000	Plate tension spring	
17	Y3FA62000	P-seal ring	
18	Y3FW98100	Outer plate assembly (GS)	
	Y3FW98080	Outer plate assembly (SGS)	
19	Y3FW50000	Bumper	
20	Y3FW98010	Tension and guide pulley set	
	Y3FW16000	Inner plate (GS)	
21	Y3FW26000	Inner plate (SGS)	
22	Y3FW98090	Pulley screw (2 pcs.)	A
23	Y04121000	Grease for stabilizer (Net. 50 g)	A
24	Y3FA98100	Stabilizer kit unit	
25	ISMEN91012A	SM-CN910-12 QUICK-LINK	A
26	Y0BM98011	OT-RS900 (black) 240 mm x 10 pcs. (with sealed outer cap and outer cap with long tongue)	A
	Y0BM98021	OT-RS900 (white) 240 mm x 10 pcs. (with sealed outer cap and outer cap with long tongue)	A
	Y0BM98031	OT-RS900 (red) 240 mm x 10 pcs. (with sealed outer cap and outer cap with long tongue)	A
	Y0BM98041	OT-RS900 (high-tech gray) 240 mm x 10 pcs. (with sealed outer cap and outer cap with long tongue)	A

A: Same parts.

B: Parts are usable, but differ in materials, appearance, finish, size, etc.

Absence of mark indicates non-interchangeability.

Specifications are subject to change without notice.

Torque information is listed.

Sep.-2023-5006

© Shimano Inc. I

SHIMANO