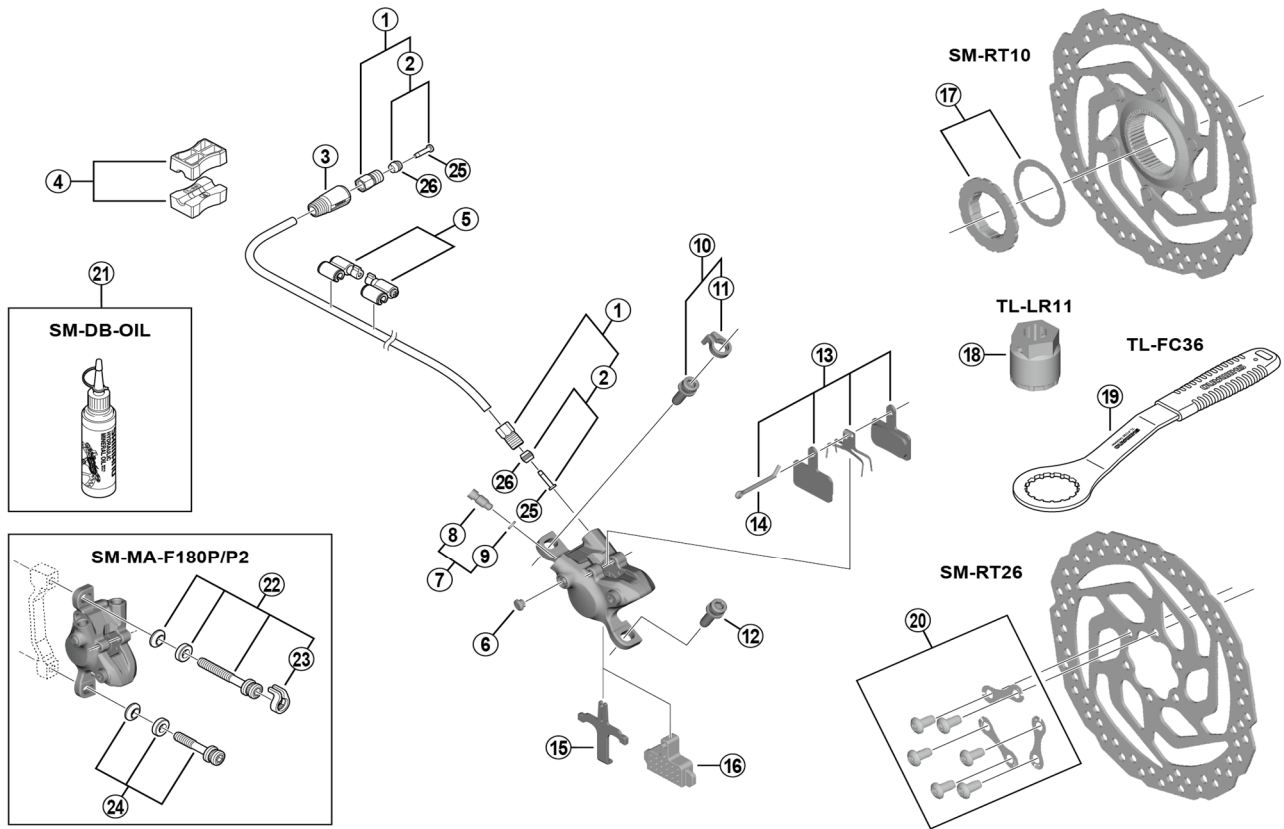


Disc Brake
BR-MT200 Brake Caliper
SM-BH59 Brake Hose

SM-RT10 Disc Rotor/Center Lock
SM-RT26 Disc Rotor/6-Bolt



ITEM NO.	SHIMANO CODE NO.	DESCRIPTION
1	Y8AL98020	Flare nut unit
2	Y8H298040	Olive and connector insert
3	Y1XW04000	Cover
4	Y8H198030	TL-BH61 Shimano original tool (2 pcs.)
5	Y83098040	SM-HANG Hose supporter A and B
6	Y88F06000	Bleed boss cap
7	Y8LS98030	Bleed screw and O-ring
8	Y8VZ07000	Bleed screw
9	Y8B511001	O-ring
10	Y2F398020	Caliper fixing screw (M6 x 18.7) and snap ring
11	Y2RT06000	Snap ring
12	Y8C509020	Caliper fixing screw (M6 x 18.7)
*	EBPB05SRXA	B05S-RX Resin pad and spring with split pin 3 type (pair)
* 13	EBPB05SRXBS	B05S-RX Resin pad and spring with split pin 3 type (25 pairs)
*	EBPB05SRXCS	B05S-RX Resin pad and spring with split pin 3 type (50 pairs)
14	Y8DB06200	Split pin
15	Y8PE03000	Pad spacer
16	Y8FZ05000	Bleeding spacer
17	Y8JX98020	Lock ring (black) and washer
18	Y8PW04100	TL-LR11 Lock ring removal tool
19	Y13098000	TL-FC36 Lock ring removal tool
20	Y8NX98010	Rotor fixing screw and lock washer
21	Y83998020	Mineral oil (100 ml)
	Y83998030	Mineral oil (500 ml)
22	Y2RT98020	Caliper fixing screw unit (M6 x 37.9)
23	Y2RT07000	Snap ring
24	Y8G498030	Caliper fixing screw unit (M6 x 32.1)
* 25	Y8H298046	Connecting insert (100 pcs.)
* 26	Y8H298047	Olive (100 pcs.)

Feb.-2022-4349D
 © Shimano Inc. I

Specifications are subject to change without notice.

SHIMANO