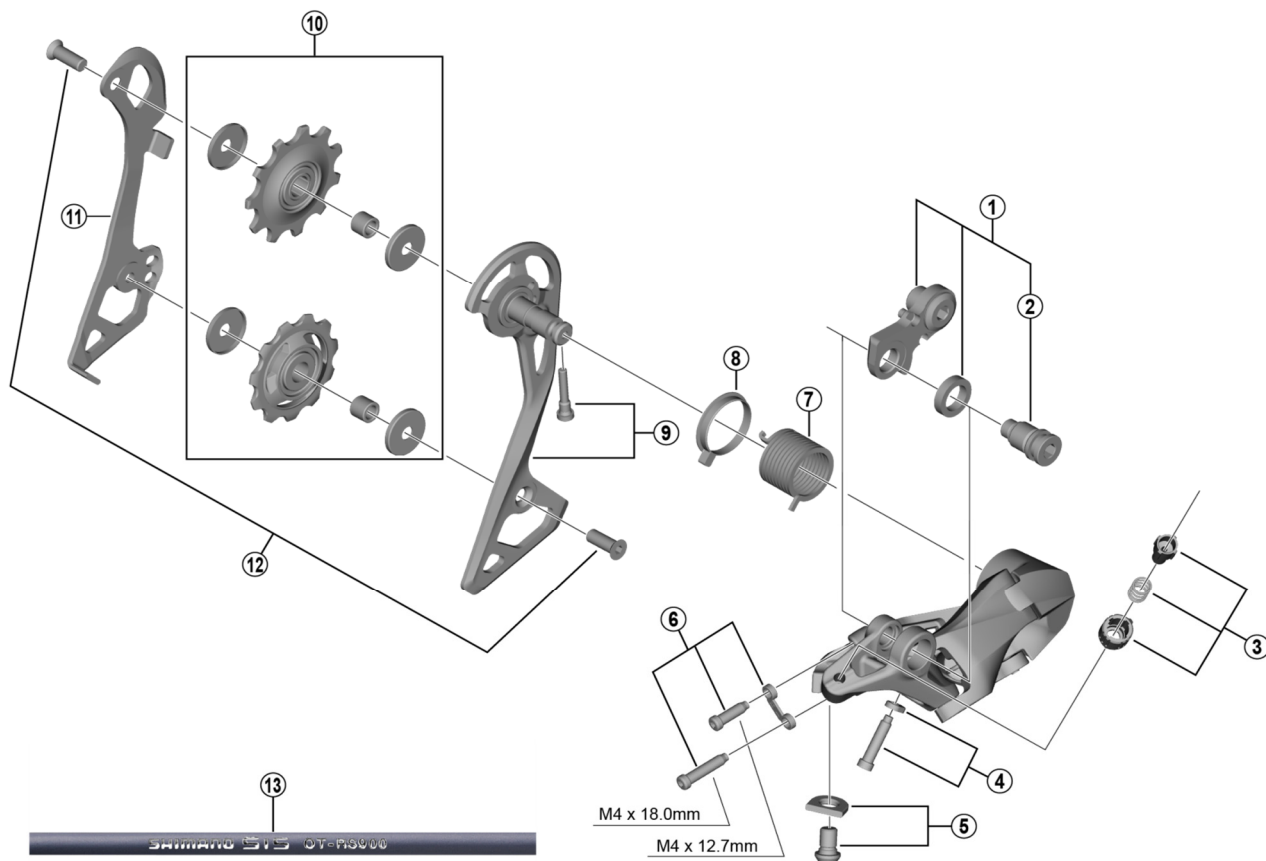


SHIMANO 105 Rear Derailleur (11-speed) RD-R7000-GS Black / Silver



RD-R8000-GS

| ITEM NO. | SHIMANO CODE NO. | DESCRIPTION | INTERCHANGEABILITY |
|----------|------------------|---|--------------------|
| 1 | Y3F398020 | Bracket Axle Unit (for normal type) | B |
| 2 | Y3F358000 | B-Axle 2 (for Direct Mount type) | |
| 3 | Y3F398030 | Cable Adjusting Bolt Unit | B |
| 4 | Y3E998040 | End Adjusting Bolt (M4 x 18) & Plate | A |
| 5 | Y3F398040 | Cable Fixing Bolt & Plate | A |
| 6 | Y3E998060 | Stroke Adjusting Bolts & Plate | A |
| 7 | Y5PV17000 | P-Tension Spring | A |
| 8 | Y5PV24000 | P-Seal Ring | A |
| 9 | Y3F398060 | Outer Plate & Fixing Bolt | |
| 10 | Y3F398010 | Tension & Guide Pulley Set | B |
| 11 | Y3F316000 | Inner Plate | B |
| 12 | Y5V598140 | Pulley Bolt (2 pcs.) | A |
| 13 | Y0BM98011 | OT-RS900 (Black) 240 mm x 10 pcs. (with Sealed Outer Cap & Outer Cap with Long Tongue) | A |
| | Y0BM98021 | OT-RS900 (White) 240 mm x 10 pcs. (with Sealed Outer Cap & Outer Cap with Long Tongue) | A |
| | Y0BM98031 | OT-RS900 (Red) 240 mm x 10 pcs. (with Sealed Outer Cap & Outer Cap with Long Tongue) | A |
| | Y0BM98041 | OT-RS900 (High-tech gray) 240 mm x 10 pcs. (with Sealed Outer Cap & Outer Cap with Long Tongue) | A |

A: Same parts.

B: Parts are usable, but differ in materials, appearance, finish, size, etc.

Absence of mark indicates non-interchangeability.

Specifications are subject to change without notice.

Jun.-2018-4338A

© Shimano Inc. I

SHIMANO