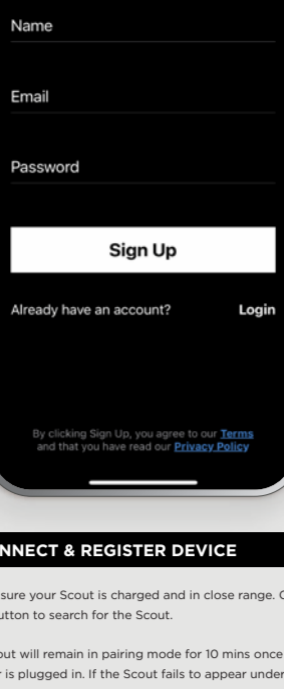


# QUICK START GUIDE

## CONTENTS

1. WHAT'S IN THE BOX
2. ENABLE PAIRING
3. SET-UP KNOG APP
4. CONNECT & REGISTER DEVICE
5. ARMING & DISARMING SCOUT
6. FIRMWARE UPDATES
7. CONNECTING TO Find My
8. CHARGING
9. MOUNTING
10. DISABLE FindMy
11. TROUBLESHOOTING
12. FACTORY RESET
13. SERIAL NUMBER LOOK-UP

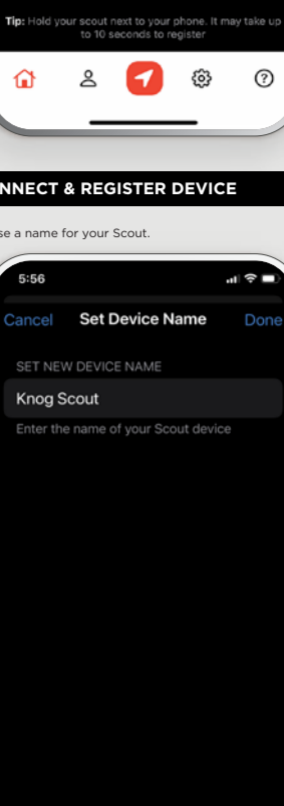
## WHAT'S IN THE BOX 1



## ENABLE PAIRING 2

Before you can pair the Scout to your iPhone, connect the Scout to a USB charging port via a standard USB-C cable. Once the charger is connected you will hear a 3-tone beep. This will enable pairing mode for 10 minutes.

*\*If the Scout was previously linked to another Knog mobile account or Apple ID, make sure that it has been removed from accounts via the Knog Mobile and Find My apps, then perform a factory reset of the Scout as described on step 11.*



## SET-UP KNOG APP 3

1. Find and install the Knog app from the app store.



2. Enter your information to create your profile.



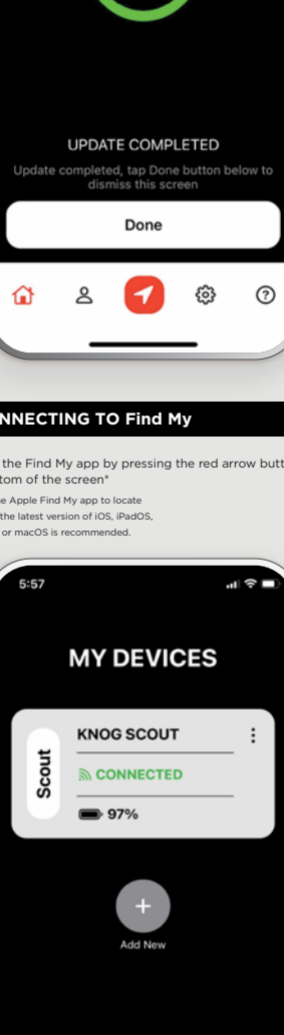
## CONNECT & REGISTER DEVICE 4.1

1. Make sure your Scout is charged and in close range. Click on the + button to search for the Scout.

The Scout will remain in pairing mode for 10 mins once the charger is plugged in. If the Scout fails to appear under 'My Devices', re-connect the charger.



2. Select device to add "Knog Scout".

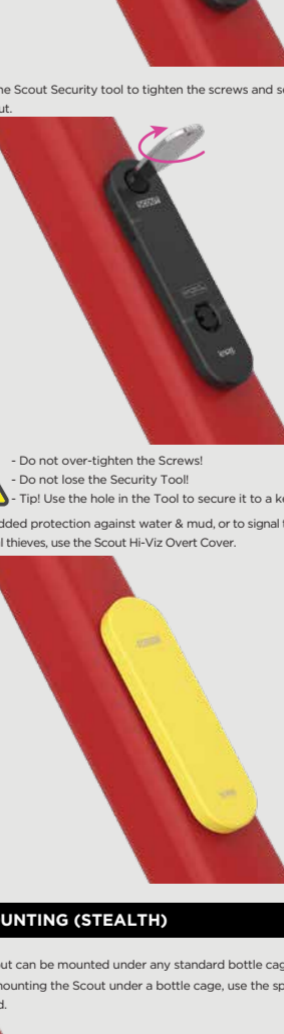


## CONNECT & REGISTER DEVICE 4.2

1. Choose a name for your Scout.

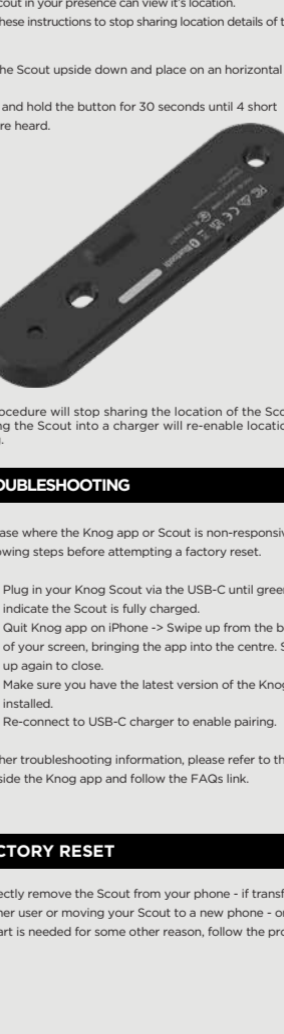


6. Complete connection by accepting Bluetooth pairing request.



## ARMING + DISARMING FROM PHONE 5.1

1. To arm Scout make sure the phone is in Bluetooth range. The Scout will show 'Connected'. Press the large bell icon on screen to arm the Scout.



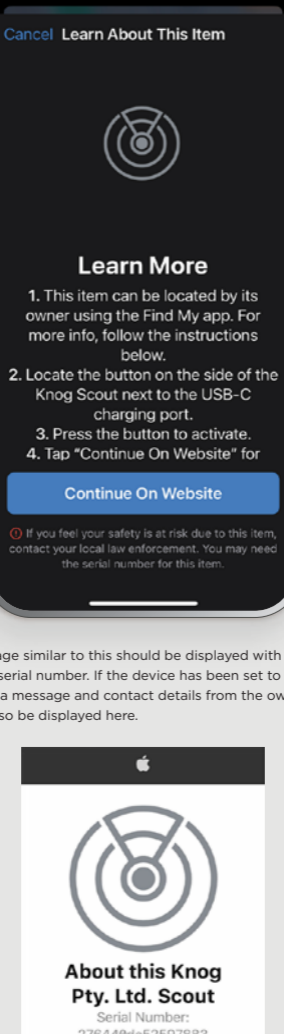
2. The bell icon button will now show the Scout is armed. To disarm, make sure the Scout is in Bluetooth range, and press the bell icon on the screen.



## ARMING FROM THE SCOUT 5.2

1. To arm the Scout, make sure the phone is in very close range and the Scout app is active.

2. Press and hold the button (1 second) on the Scout to begin arming.



Whilst arming, the Scout LEDs will flash red and the bell icon will appear yellow.



**⚠ Scout cannot be armed unless phone is in very close range.**

## DISARMING FROM THE SCOUT 5.3

1. To disarm the Scout make sure the phone is in very close range and the Knog app is active on the phone.



2. Press and hold the button (1 second) on the Scout to disarm it.



**⚠ Scout cannot be disarmed unless phone is in very close range.**

## FIRMWARE UPDATE 6

Once the Scout is connected, inside the app select the 3 dots for more options. Scroll down, and select 'Update Firmware'.

If the device has the most up-to-date firmware already installed, a message "You are up to date" will be displayed.

If a firmware update is available, download and install it to the Scout.



The firmware update process will begin, indicating the installation progress. If the user selects 'Cancel' at anytime, the Scout will continue to use the existing version of firmware.

Once the firmware update is downloaded and installed, the Scout will automatically reset to activate the update.

Once the firmware update process is complete, a green tick will be displayed.



## CONNECTING TO Find My 7

1. Open the Find My app by pressing the red arrow button at the bottom of the screen.

\*To use the Apple Find My app to locate this item, the latest version of iOS, iPadOS, watchOS, or macOS is recommended.



2. Press 'Add New Item'

3. Select 'Add Other Item'



4. When the Scout appears, press to connect to Find My. Select and name your Scout.



To finalise the Find My setup agree to the Apple Find My terms and conditions.

Initiating, but failing to complete the setup will result in an incomplete connection.

## CHARGING 8

1. Open USB door seal.



2. Plug in USB-C charging cable. Red LED indicates charging.



3. Green LED indicates fully charged.



## MOUNTING (OVERT) 9.1

The Scout can be mounted to any standard bottle cage location.



2. Use the Scout Security tool to tighten the screws and secure the Scout.



**⚠ Do not over-tighten the Screws!  
Do not lose the Security Tool!  
- Tip! Use the hole in the Tool to secure it to a keyring**

3. For added protection against water & mud, or to signal to potential thieves, use the Scout Hi-Viz Overt Cover.



## MOUNTING (ST EALTH) 9.2

The Scout can be mounted under any standard bottle cage.

When mounting the Scout under a bottle cage, use the spacers provided.



## DISABLE Find My (Unwanted Tracking) 10

Note: This is NOT describing the method to remove your Scout from the Find My app.

If you receive an Apple Unwanted Tracking notification, the owner of the Scout in your presence can view it's location. Follow these instructions to stop sharing location details of the Scout.

1. Turn the Scout upside down and place on an horizontal surface.

2. Press and hold the button for 30 seconds until 4 short beeps are heard.



This procedure will stop sharing the location of the Scout. Plugging the Scout into a charger will re-enable location sharing.

## TROUBLESHOOTING 11

In any case where the Knog app or Scout is non-responsive, try the following steps before attempting a factory reset.

1. Plug in your Scout via the USB-C until green light indicate the Scout is fully charged.
2. Quit Knog app on iPhone -> Swipe up from the bottom of your screen, bringing the app into the centre. Swipe up again to close.
3. Make sure you have the latest version of the Knog app installed.
4. Re-connect to USB-C charger to enable pairing.

For further troubleshooting information, please refer to the 'help' page inside the Knog app and follow the FAQs link.

## FACTORY RESET 12

To correctly remove the Scout from your phone - if transferring to another user or moving your Scout to a new phone - or if a fresh start is needed for some other reason, follow the process below.

1. Remove Knog Mobile app connection

a. Open iOS->Settings->Bluetooth, and find the Knog Scout connection. Select the marker next to the connection. If you have more than one Scout, move to a position where only the Scout you would like to remove is in range and shown as Connected.

b. Select 'Forget This Device'.

c. Open the Knog app, and remove the Scout.

2. Remove Scout from Find My Network

a. Open the Find My app, and select the Scout you would like to remove. Scroll down, and select the Remove item option as shown below. The Knog Scout is no longer registered with Find My after this step.

3. Factory Reset on Scout

a. Turn the Scout upside down and place on an horizontal surface.



## SERIAL NUMBER LOOK UP 13

The Apple Find My app can be used to lookup the serial number of an unknown Scout in your possession.

1. In the Find My app, select Identify found item, when the unknown Scout is nearby.



2. Select the item from a list of nearby items, then press Continue.



3. When the following page is displayed, press the button on the Scout, then select 'Continue On Website'.



1. This item can be located by its owner using the Find My app. For more info, follow the instructions below.
2. Locate the button on the side of the Knog Scout next to the USB-C charging port.
3. Press the button to activate.
4. Tap "Continue On Website" for

**⚠ If you feel your safety is at risk due to this item, contact your local law enforcement. You may need the serial number for this item.**



The owner of this item has marked it as lost.

"This item has been lost."

\*\*\* \*\* 534

The owner of this item can view its location. If this item is not familiar to you, learn how to disable it and stop sharing your location.

[Instructions for disabling >](#)