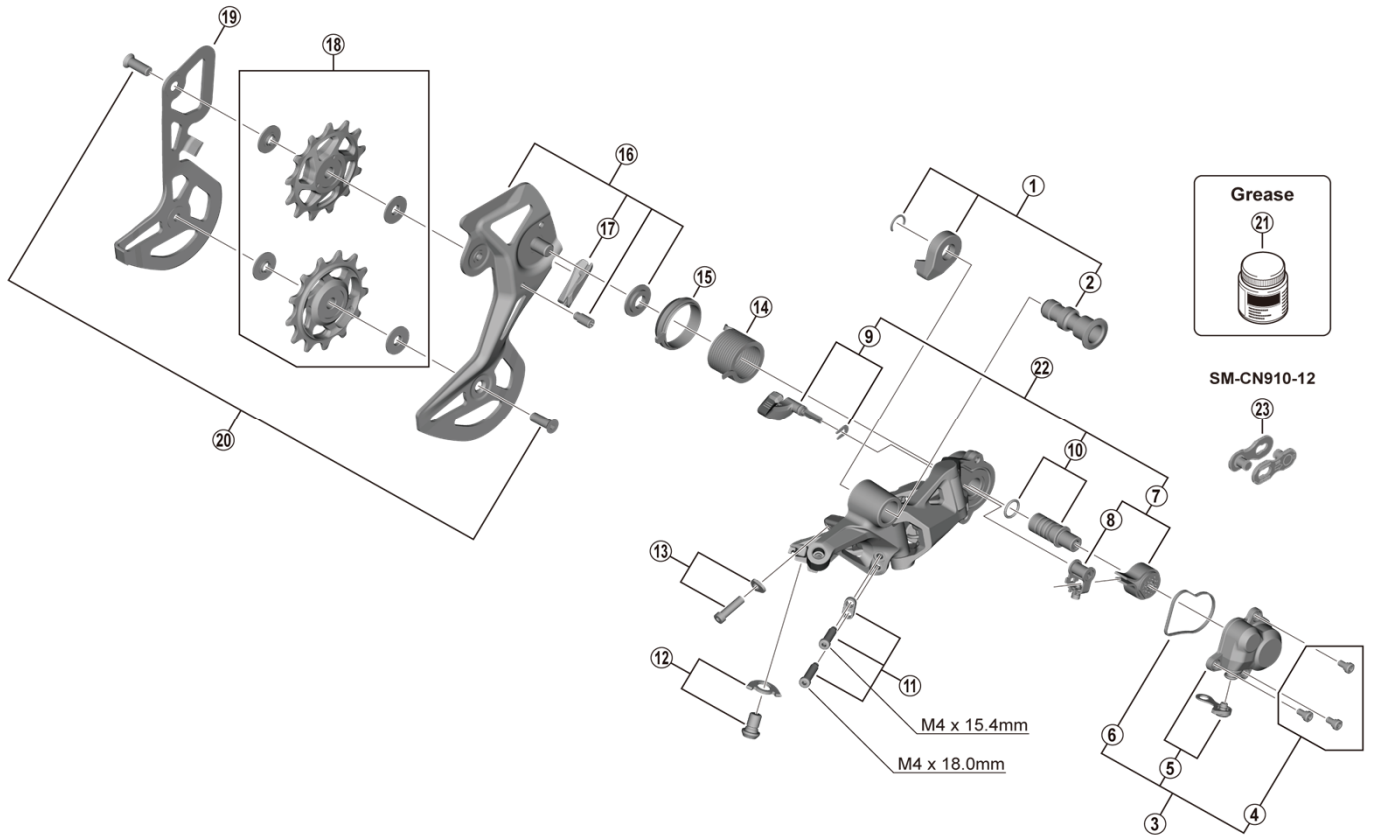


DEORE XT Rear Derailleur
RD-M8100-GS 12-speed



ITEM NO.	SHIMANO CODE NO.	DESCRIPTION	INTERCHANGE-ABILITY		
1	Y3FW98020	Bracket axle unit	A		
2	Y3FW42000	B-axle	A		
3	Y3FW98030	P-cover unit	A		
4	Y5Y198070	P-cover screw set (3 pcs.)	A		
5	Y3FW98040	P-cover and cap	A		
6	Y3FA63000	P-cover packing	A		
7	Y3GF98040	Stabilizer unit and cam unit	A		
8	Y3E498040	Cam unit	A		
9	Y3FA98040	Switch lever unit and fixing plate	A		
10	Y5PV98060	P-axle and O-ring	A		
11	Y3FW98050	Stroke adjusting screw and plate	A		
12	Y3FW98060	Cable fixing screw unit	A		
13	Y3FW98070	End adjust screw (M4 x 14.1) and plate	A		
14	Y3FA55000	P-tension spring	A		
15	Y3FA62000	P-seal ring	A		
16	Y3FW98100	Outer plate assembly (GS)			
17	Y3FW50000	Bumper	A		
18	Y3FW98010	Tension and guide pulley set	A		
19	Y3FW16000	Inner plate (GS)			
20	Y3FW98090	Pulley screw (2 pcs.)	A		
21	Y04121000	New grease for stabilizer (Net. 50 g)	A		
22	Y3FA98100	Stabilizer kit unit	A		
23	ISMEN91012A	SM-CN910-12 QUICK-LINK			

A: Same parts.

B: Parts are usable, but differ in materials, appearance, finish, size, etc.

Absence of mark indicates non-interchangeability.

Specifications are subject to change without notice.

Jul.-2021-4874

© Shimano Inc. I

SHIMANO